

FDU

Personal. Global. Transformational.

University Community Town Hall, April 1, 2025

Middle States Commission on Higher Education (MSCHE)

Self-Study 2024-2025

Reaccreditation Team Visit: April 6 – April 9, 2025

Accreditation

Accreditation is a Federal requirement for colleges and universities to assure:

- The educational enterprise of a college or university is sound and worth the investment of Federal monies.
- The public, parents, students and funders that our programs, and degrees have been audited by an independent third party.

- ❖ There are 7 National Accrediting Bodies in the U.S.
- ❖ MSCHE is our University's accrediting body.
- ❖ MSCHE = Middle States Commission on Higher Education

Every eight years (formerly ten), our institution goes through a **self-study process** in order to reaffirm our accreditation. Our last Self-Study was 2015-16.

The Self-Study

The Self-Study **process** culminates in a Self-Study **Report** we submit to MSCHE.

Backward-looking:

- Assesses educational quality
- Assesses success in meeting our mission and goals
- Demonstrates compliance with MSCHE Standards & Requirements of Affiliation

Forward-looking:

- Identifies opportunities for improvement & innovation

"Self-study will require that the institution engage in an in-depth, comprehensive, and reflective assessment process to assess the institution's educational quality and success in meeting its mission, as well as identify opportunities for improvement and innovation. Through this process, the institution must provide evidence and document compliance with the Commission's standards for accreditation, requirements of affiliation, policies and procedures, and applicable federal compliance regulatory requirements."

- MSCHE

MSCHE Standards



- Standard I - Mission and Goals
- Standard II - Ethics and Integrity
- Standard III - Design and Delivery of the Student Learning Experience
- Standard IV - Support of the Student Experience
- Standard V - Educational Effectiveness Assessment
- Standard VI - Planning, Resources, and Institutional Improvement
- Standard VII - Governance, Leadership, and Administration

<https://www.msche.org/standards/>

Self-Study Process – Start to (Almost!) Finish

- **Fall 2022 – Getting organized:** Co-chairs named, Steering Committee formed, approach to organization of Self-Study identified
- **Spring 2023 – Work begins:** Steering Committee meetings begin, evidence inventory created, FDU Self-Study Website launched, MSCHE VP Terence Peavy visits Metro campus and holds Town Hall
- **Fall 2023 – Call for Volunteers & First Draft:** President invites entire University to volunteer for Working Groups, Working Groups begin work, first drafts of Self-Study Report chapters developed
- **Spring 2024 – Second Draft:** Steering Committee provides feedback on first drafts, Working Groups develop second drafts
- **Summer 2024 – Editing:** Second draft edited, evidence added

Self-Study Process – Start to (Almost!) Finish

- **Fall 2024 – University Community Feedback & Team Chair Visit:** First University Community review draft (mid-October), Town Hall (Oct. 30), feedback collected via Town Hall and online form, draft revised based on feedback and submitted to MSCHE Team Chair, MSCHE Team Chair visits NJ campuses (Nov. 19-20), draft revised in response to MSCHE Team Chair feedback
- **Spring 2025 – Draft Finalized & Submitted, MSCHE Team Visit:** Self-Study Report uploaded with evidence to MSCHE portal (January), MSCHE Team member visits Vancouver campus (March 25), MSCHE Team member visits last required additional location (March 25)
- **Where we are now:** MSCHE is coming! The MSCHE Team will be visiting our Florham campus April 6-9, 2025.

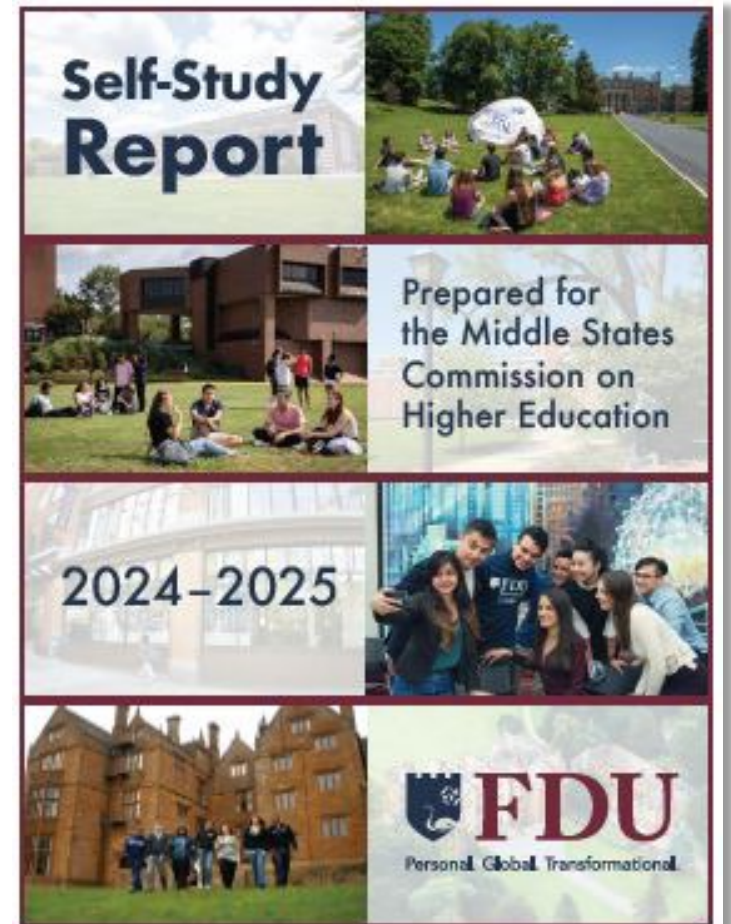
Self-Study Participation By the Numbers

- 132 University Community members (including faculty, admin, staff, students) participated in the Self-Study process!
- 38 Steering Committee members
- 8 Working Groups (with 15-20 members each!)
- 4 Campuses
- 2 Steering Committee Co-chairs (one faculty, one administrator)
- 1 Accreditation Liaison Officer (ALO)
- 1 Provost & Senior VP for Academic Affairs
- 1 President

COUNTLESS other University community members who contributed in SO many ways to the Self-Study!

Self-Study Report

Chapter 1	Mission and Goals
Chapter 2	Assessment of Learning
Chapter 3	Governance, Leadership, & Administration
Chapter 4	Financial Sustainability
Chapter 5	Personal
Chapter 6	Global
Chapter 7	Transformational
Chapter 8	Socioeconomic & Environmental Sustainability



MSCHE Team Visit

WHEN: Sunday, April 6 to Wednesday, April 9

Monday, April 7: Meetings with President, Steering Committee, Standards-based Groups, and Students

Tuesday, April 8: Meetings with President, Co-Chairs, Standards-based Groups, Faculty, and Supplemental Meetings upon Request

Wednesday, April 9: Team Chair with President, Community Exit Oral Report

WHERE: Florham Campus (the majority of meetings will be first floor of the Mansion; the Community Exit Oral Report will be in the Orangerie in the Monninger Center)

WHO: 8 MSCHE Team Members + 1 Representative from the NJ Office of the Secretary of Higher Education (OSHE)



Dr. Kimberly R Cline (Team
Chair)
President, Long Island
University



Ms. Erin Galbally
Principal Counsel,
Thomas Jefferson
University



Dr. Joel Baldomir
Faculty Director of
Professional Studies,
Marist College



Dr. Hormoz
Movassaghi
Professor of Finance &
International Business,
Ithaca College



Ms. Lynda Buzzard
Vice President of Finance
& Administration,
Villanova University



Dr. David N. Rahni
Associate Provost for
Academic Affairs &
Professor of Chemistry,
Pace University



Dr. Marian Stoltz-Loike
Vice President, Online Education,
Touro University



Dr. Allison Turcio
Assistant Vice President for
Enrollment and Marketing,
Siena College



Dr. Adrian Wright
Licensure Program Coordinator,
NJ OSHE

You're invited!

- **All faculty** are invited to attend the All Faculty meeting with the Visiting Team on **Tuesday, April 8 from 11:30am – 12:30pm in the Orangerie**. There is an option to join via Zoom for those unable to attend in person.
- The **entire University Community** is invited to attend the Exit Oral Report on **Wednesday, April 9 from 10:30 – 11:30am in The Orangerie (Monninger Center, Florham)**. There is an option to join via Zoom for those unable to attend in person.
- Please note that those faculty/staff/students whose participation has been requested for specific meetings with the Visiting Team have received details and specifics via email.

In-Person Participation at Florham for Metro Faculty/Staff

- **Transportation** to Florham
- **Parking** at Florham
- **Mileage reimbursement** for travel from Metro to Florham and back
- **Dining passes** for lunch at the student cafeteria at Florham will be available to all Metro faculty/staff who are attending MSCHE Visiting Team meetings or the Community Exit Oral Report in person on the Florham campus
- **Lounge / co-working space for Metro faculty/staff** - The Silberman Conference Room (2nd Floor Mansion, Room W-18) will be available for Metro faculty and staff who need to be at Florham for MSCHE meetings April 7-9 (9a-5p)

Remote (Zoom) Participation for Metro, Vancouver, and Wroxton Faculty/Staff/Students

- Metro, Vancouver, and Wroxton faculty/staff/students who have been invited to a meeting with the Visiting Team and need to join remotely via Zoom are asked to follow these guidelines:
 - Please add your role/title to your display name for the benefit of the Visiting Team
 - Please keep your video on
 - Please mute your microphone unless speaking
 - Please raise your virtual (Zoom) hand if you would like to answer a question or share something with the Visiting Team

Preparing for the Visit and Meetings with the Team – *Do your Homework!*

We encourage all faculty/staff/students—and particularly those in meetings with the Visiting Team—to:

- Review our Self-Study Report prior to the visit (the report is available on our Self-Study website at <https://www.fdu.edu/self-study/>)
- Review the MSCHE Standards (13th edition) at <https://www.msche.org/standards/thirteenth-edition/>

Preparing for the Visit and Meetings with the Team – *Remember YOU are Part of the Team!*

It is important to us – and to MSCHE – that our self-study has been a transparent, collaborative, and inclusive process.

- Information regarding the Self-Study has been posted on our University website since the start of the process.
- The entire University community was invited to a Town Hall with our MSCHE VP liaison at the start of the process.
- Everyone in the University community was invited to participate in the self-study process as a Working Group member.
- The draft was shared with the University community in October and revised in response to feedback received for the Town Hall and the online form.
- The University community was invited to a Town Hall with our Visiting Team chair this past November.
- The final draft of the Self-Study Report was shared with the University community on the Self-Study website after it was submitted to MSCHE.

Preparing for the Visit and Meetings with the Team – *Keep your Eye on the Goal!*

- We need to demonstrate that we meet MSCHE Standards.
- The focus of the visit is on our Self-Study Report.
- We need to show the Visiting Team that what we say in the Self-Study Report is an accurate assessment and reflection of who we are as an institution and what we do.
- If you are asked a question by a member of the Visiting Team (whether in a meeting or in passing) that you do not know the answer to, please tell them that you will find the answer and be sure it is shared with them (then please contact Patty, Karen, and/or Sam with the question and we will take it from there)

Patty Keefe Durso pkd@fdu.edu, Karen Denning denning@fdu.edu, Sam Michalowski IR_Sam@fdu.edu

THANK YOU!!

**To our University Community
To our Steering Committee
To our Working Groups**

Questions?